



aapptec®

Maintenance and Troubleshooting
LabMate

Lab-Mate Maintenance

The instrument requires very little maintenance. If it should require repair, it must be returned to _____ for service.

The PTFE reactors can be cleaned with aqueous or organic solvents. If the filters are very dirty or stopped up they should be replaced. Use the hook on the frit removal tool to remove the old filter (Fig 1). Use the frit insertion tool (P/N 251260) to press the new filter in place.

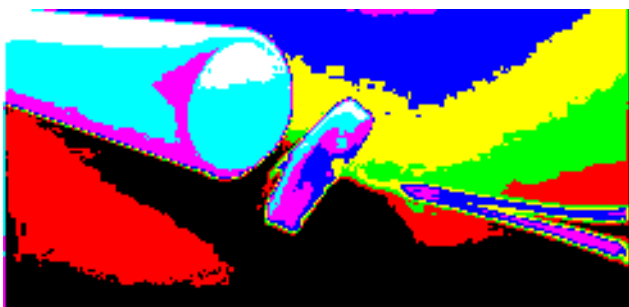
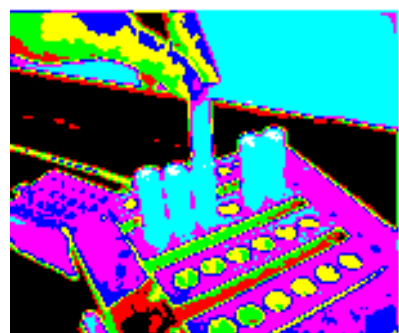


Fig. 1



Septum replacement

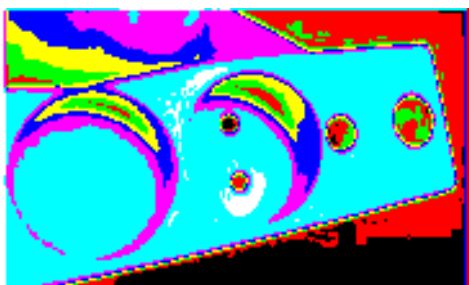


Fig. 2a

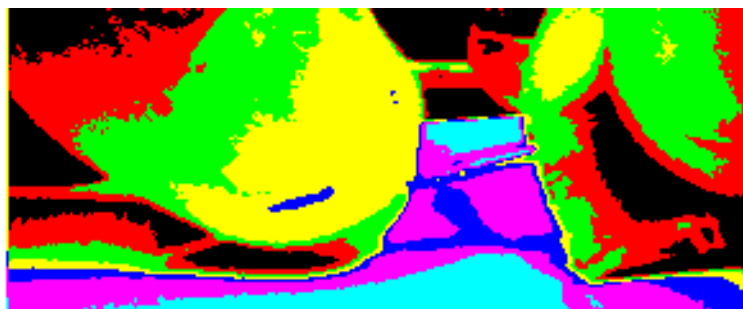


Fig. 2b

Septa located in the clamp plate seal the individual reactors. These should be replaced at the start of every synthesis. Simply pull out the used septum and drop in a new one (Fig. 2a).

Warning: Instruments returned to _____ for service must be cleaned and free from hazardous materials. Failure to comply may cause you to incur additional fees.

Needle replacement

Each needle is fastened to the tubing with a small clamp and set screws. Loosen the set screws and slide the old needle out of the clamp. The needle is press-fitted into the end of the tubing; to remove the needle from the tubing, simply pull it free (Fig. 2b).

Insert a replacement needle into the tubing. Grasp the tubing with a small piece of sandpaper. Thread the blunt end of the needle into the tubing as shown. Slide the needle into its housing (i.e. clamp), and fasten the three set screws to fix it in place (Fig. 3).

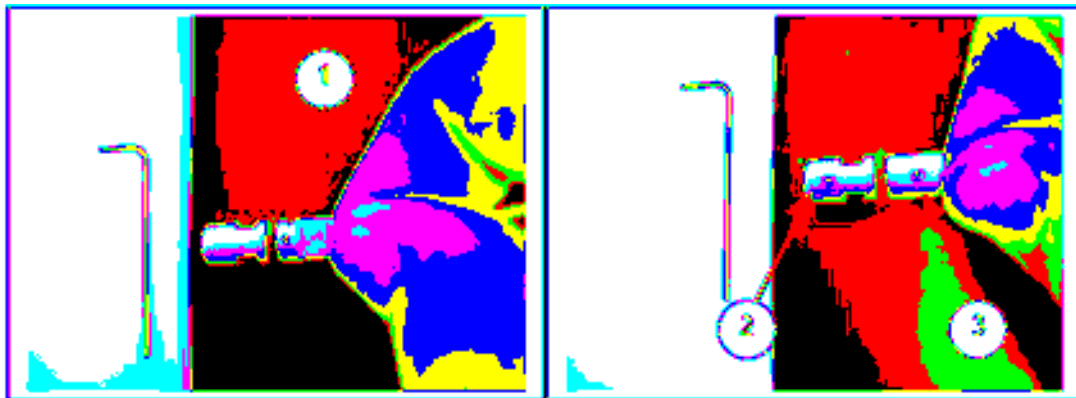


Fig. 3

Gasket and Septum Replacement; Waste and Cleavage Modules

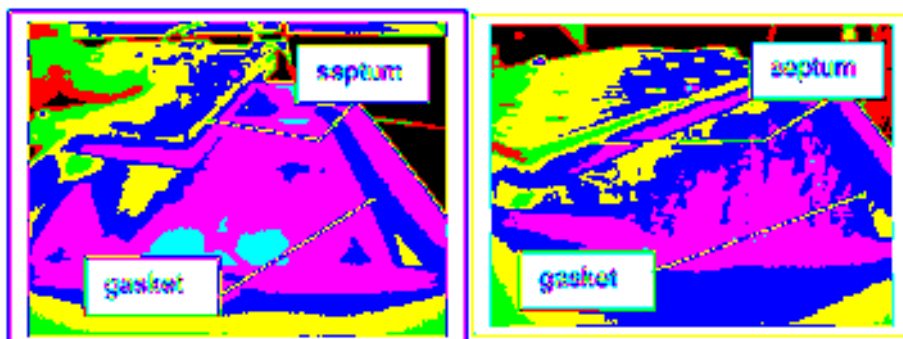


Fig. 4

Septa are sandwiched between the top plate and the plastic back. In order to replace them, unscrew the top plate from its plastic backing. Gaskets form a seal between the top plate and the module body. These are replaced by simply pulling out the old gasket and dropping in a new one (Fig. 4).